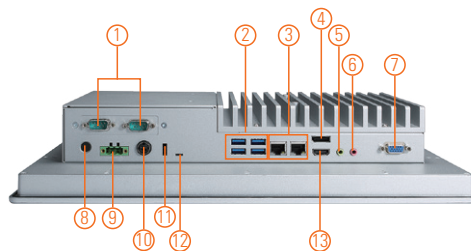
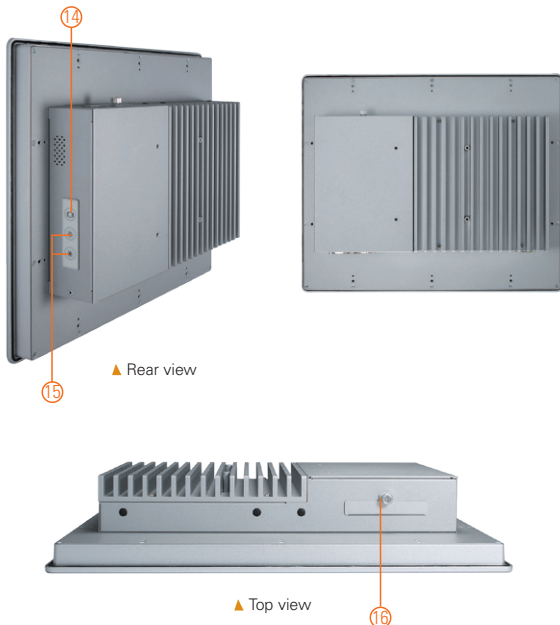
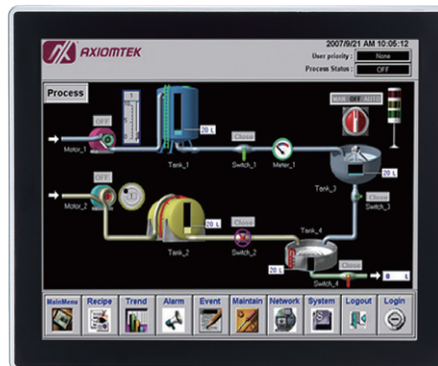


# GOT317-502-FR

17" SXGA TFT Expandable Touch Panel Computer with 7th/6th Gen Intel® Core™ i7/i5/i3 Processor

## Features

- 17" SXGA TFT flat resistive touch
- LGA1151 socket 7th/6th gen Intel® Core™ i7/i5/i3, Celeron® & Pentium® processor
- Intel® H110 chipset
- 2 LANs, 4 USB 3.0 and 2 COM
- 2.5" SATA SDD, HDD (wide temp.), and mSATA
- WLAN module & antenna (optional)
- IP65-rated front bezel
- Supports panel mount and VESA mount (VESA arm/desktop stand/wall mount optional)
- Built-in speakers and swappable hard drive design



- |                    |                                      |                           |
|--------------------|--------------------------------------|---------------------------|
| 1. 2 x COM (cable) | 7. VGA (cable)                       | 13. HDMI                  |
| 2. 4 x USB 3.0     | 8. Power button (ATX)                | 14. Backlight switch      |
| 3. 2 x LAN         | 9. Terminal block for DC power input | 15. Brightness adjust +/- |
| 4. DisplayPort     | 10. Power input connector            | 16. Swappable HDD         |
| 5. 1 x Line-out    | 11. Remote power switch port         |                           |
| 6. 1 x Mic-in      | 12. AT/ATX selectable switch         |                           |



## Introduction

The GOT317-502-FR is a multimedia 17" touch panel PC for kiosk application. It has a fashionable mechanism design and industrial-grade material front bezel which can avoid damage from chemical corrosion. To meet the demands of multimedia application, the GOT317-502-FR is powered by a high performance LGA1151 socket 7th/6th generation Intel® Core™ processor with the Intel® H110 chipset. It features two COM ports, two Gigabit Ethernet and up to 32GB memory of dual-channel DDR4-2400 that delivers high computing capability for high performance-demanding applications. The industrial touch panel PC is suitable for kiosk and factory automation.

### Swappable hard drive design

The GOT317-502-FR is equipped with an easy-swappable 2.5" HDD for extensive storage needs.

### Speaker and WLAN Antenna Supported

The GOT317-502-FR is equipped with built-in speakers for multimedia applications. It also supports WLAN module antenna (optional) for wireless network connectivity.

## Specifications

Front Bezel	Aluminum w/ IP65/NEMA 4 rugged protection	
LCD Panel	Display Type	17" SXGA TFT LCD
	Brightness	350 nits
	Resolution	1280 x 1024 pixels
	Viewing Angle	160°/140°
Main System	CPU	LGA1151 socket 7th/6th gen Intel® Core™ i7/i5/i3, Celeron® & Pentium® processor
	Chipset	Intel® H110
	System Memory	2 x 260-pin DDR4-2400 SO-DIMM, up to 32GB
	BIOS	AMI UEFI BIOS
	Storage	1 x 2.5" SATA HDD (9.5 mm height)
	Drive	N/A
	Watchdog Timer	255 levels, 1 to 255 sec.

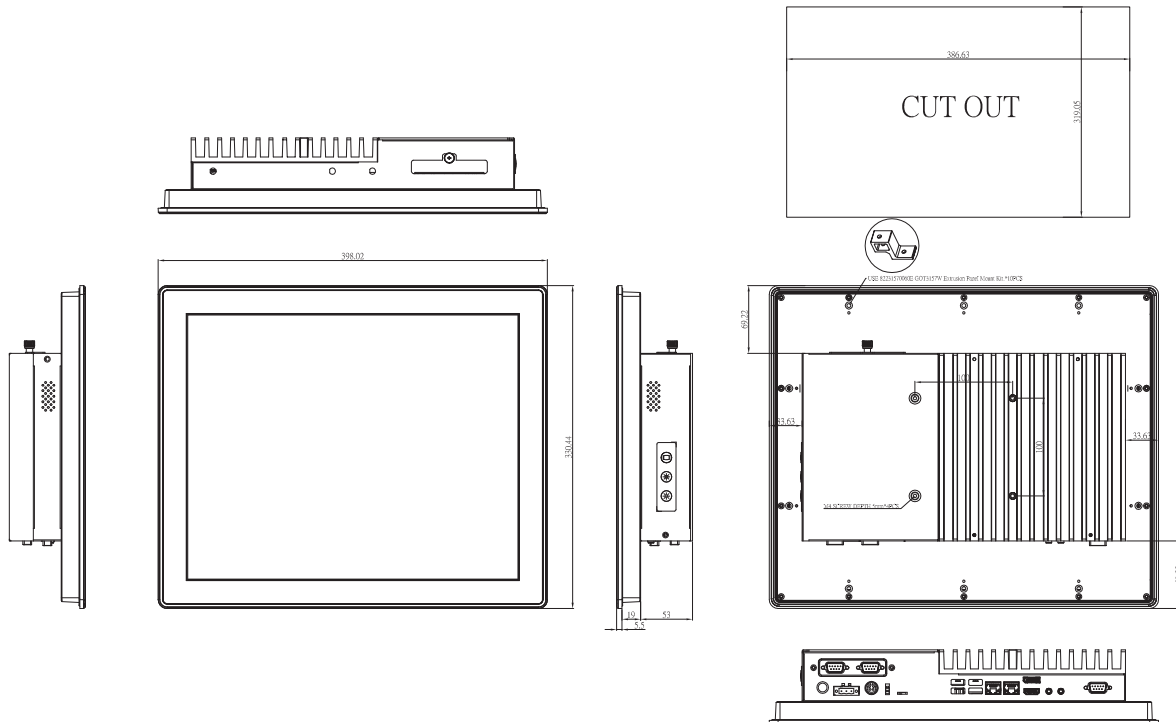
## Specifications

IO Connector	2 x RS-232/422/485 1 x HDMI v1.4 1 x VGA (up to 1920 x 1200 60Hz) 1 x DisplayPort v1.2 (DP++) 4 x USB 3.0 2 x 10/100/1000 Mbps Ethernet (Intel® i219-V & i211-AT) 1 x Audio (Mic-in & Line-out)
TPM	N/A
Expansion Interface	1 x Half-size PCI Express Mini Card slot with mPCIe 1 1 x Full-size PCI Express Mini Card slot with mSATA or mPCIe 2
Touchscreen	Flat resistive touch
Power Supply	DC terminal block: +12V/+19V/+24V AC adapter: 19V, 6.32A
Power Consumption	120W (include 35W processor)
Dimensions	398.02 mm (15.67") (W) x 77.5 mm (3.05") (D) x 330.44 mm (13.01") (H)
Packing Dimensions	510 mm (20.08") (W) x 190 mm (7.48") (D) x 540 mm (21.26") (H)
Weight (net/gross)	6.7 kg (14.77 lb)/9.0 kg (19.84 lb)
Operating Temperature	0°C to +40°C (+32°F to +104°F)
Relative Humidity	10% to 90% @ +40°C, non-considering
Operating Vibration	1.0G, 5 - 500Hz, random
Certifications	CE

## Packing List

- 1 x GOT317-502-FR
- 1 x Driver CD
- 1 x Phoenix connector
- 1 x Panel mount kit
- 1 x Adapter

## Dimensions



## Ordering Information

GOT317-502-FR-DC	17" SXGA TFT fanless touch panel computer with LGA1151 socket 7th/6th gen Intel® Core™, Pentium® & Celeron® processor, 5-wire flat resistive touch screen and 12/19/24 VDC terminal block connector
------------------	---

\* Specifications and certifications may vary based on different requirements.

## Optional Accessories

Wi-Fi	
82231770060E	Rack mount kit
82231770050E	GOT3177T-834 wall mount kit

## Optional EOS Installation

Windows® 7	
Windows® 8.1	
Windows® 10 IoT Enterprise	

## Optional OS Installation

Skylake: Windows® 7	
Windows® 8.1	
Windows® 10	
Kaby Lake: Windows® 10	